



## **BISHOP COTTON WOMEN'S CHRISTIAN COLLEGE**

C.S.I Karnataka Central Diocese

#19,3<sup>rd</sup> Cross, C.S.I Compound, Mission Road, Bengaluru – 560027

Affiliated to Bengaluru City University

Contact No: 080 – 22212933/22129880

Email: [principal@bcwcc.edu.in](mailto:principal@bcwcc.edu.in)

Website: [www.bcwcc.edu.in](http://www.bcwcc.edu.in)

The Institution has collected feedback from various stakeholders i.e. Students and Faculty for the year 2018-2019.

### **Students Feedback on Curriculum and Ambience**

Feedback has been collected online from students regarding the curriculum and ambience of the Institution. The feedback has been analyzed and the Action taken report is prepared based on feedback and suggestions from the Governing Council

### **Faculty Feedback on Curriculum and Ambience**

Feedback has been collected online from faculty regarding the curriculum and ambience of the Institution. The feedback has been analyzed and the Action taken report is prepared based on feedback and suggestions from the Governing Council



# BISHOP COTTON WOMEN'S CHRISTIAN COLLEGE

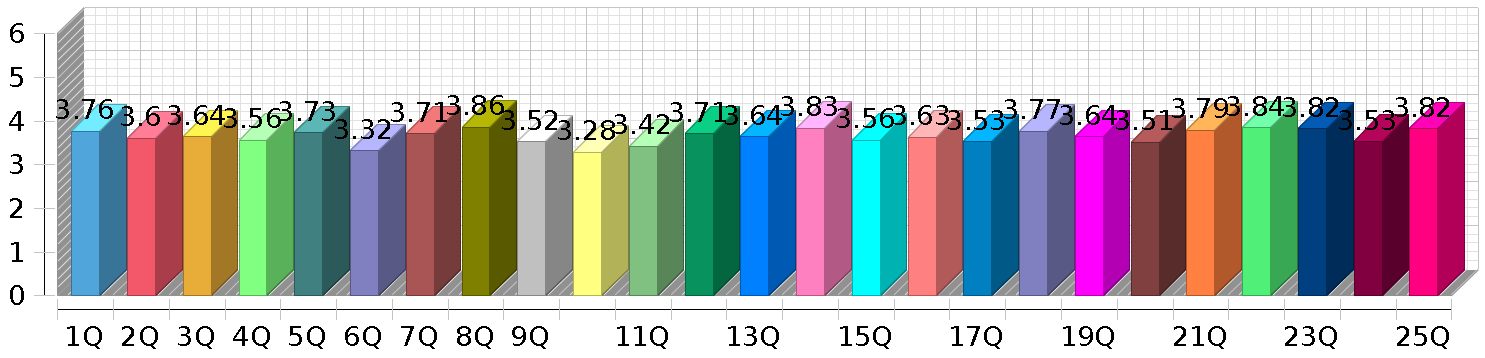
No 19, 3rd cross, C.S.I Compound Bangalore - 560027

## *Students Curriculum Feedback For The Academic Year 2018-2019*

<b>Rating Scale</b>	<b>5</b>	<b>4</b>	<b>3</b>	<b>2</b>	<b>1</b>
<b>Rating</b>	<b>EXCELLENT</b>	<b>VERY GOOD</b>	<b>GOOD</b>	<b>AVERAGE</b>	<b>POOR</b>

SL.No	QUESTION	RATING
1	Quality of Education	3.76
2	Faculty Contribution to your academic growth-Development of critical thinking skills/Referencing skills/Departmental news letters/journals	3.6
3	Learning Environment	3.64
4	Awareness programs/Sensitization programs-rallies,walkathons,prism visits/Leadership training camps	3.56
5	College manual & calendar of events/Prospectus/College magazine	3.73
6	Revision/Remedial classes	3.32
7	Retreats/Communion and Chapel services	3.71
8	Theme building activities-Class tuck shops,Graffiti,Class Assemblies,Outreach programs,Wall Journals -Bulletin boards & News boards	3.86
9	Innovative Teaching Methods-ICT,Group discussions,Group work/Peer teaching/Screening of textual adaptations/Performances of textual material through dramas/Plays,lectures & presentations by students	3.52
10	Internships/projects/assignments	3.28
11	Certificate courses/value added courses	3.42
12	Observance of events & occasions-Fresher's day/Talent hunt/Teacher's day/Christmas programs etc	3.71
13	Laboratories and its facilities-Science labs/Psychology lab/Language lab/Commerce and Management lab	3.64
14	Departmental Events-Inter class competitions/Hindi Divas/Kannada Nadu Nudi Habba etc	3.83
15	Value Education-Personality development,Morals and Ethics classes	3.56
16	Student counselling/Career guidance/Anti Ragging Cell	3.63
17	Mentor-Ward System	3.53
18	NCC/NSS/Eco Watch/Rotaract/Legal Literacy programme/SCM/YWCA/Youth Red Cross/Choir/Incubation and Innovation centre/Entrepreneurship(E Cell)	3.77
19	Seminars/Workshops/Guest lectures	3.64
20	Field visits/Industrial trips	3.51
21	Medical checkups/Blood donation camps/Infirmary	3.79
22	Theme based Assemblies	3.84
23	Culture Awareness Programs-Cultural week/Ethnic day/Field trips to places of cultural significance etc	3.82
24	Excursions /One day trips	3.53
25	Intercollegiate Literary & Cultural Fests	3.82
	<b>AVERAGE</b>	<b>3.64</b>

# FEEDBACK ANALYSIS REPORT





## BISHOP COTTON WOMEN'S CHRISTIAN COLLEGE

C.S.I Karnataka Central Diocese

#19,3<sup>rd</sup> Cross, C.S.I Compound, Mission Road, Bengaluru – 560027

Affiliated to Bengaluru City University

Contact No: 080 – 22212933/22129880

Email: principal@bcwcc.edu.in

Website: www.bcwcc.edu.in

### STUDENTS FEEDBACK ANALYSIS 2018-2019

The Curriculum feedback analysis of students indicates a total score of **3.64/5**

1. Theme-building activities tuck shops, Graffiti, Class Assemblies, Outreach programs, Wall Journals -Bulletin boards & News boards have scored the highest of **3.86**.
2. Theme-based assembles at the second highest at **3.84**
3. Departmental Events-Inter class competitions/Hindi Divas/Kannada Nadu Nudi Habba etc. **3.83**
4. Intercollegiate Literary & Cultural Fests and Culture Awareness Programs and Cultural week/Ethnic day/Field trips to places of cultural significance etc **3.82**
5. Medical checkups/Blood donation camps/Infirmary at **3.79**
6. NCC/NSS/Eco Watch/Rotaract /Legal Literacy programme /SCM/YWCA/Youth Red Cross/Choir/Incubation and Innovation centre /Entrepreneurship (E Cell) at **3.77**
7. Quality of Education at **3.76**
8. College manual & calendar of events/Prospectus/College magazine at **3.73**
9. Retreats/Communion and Chapel services and Observance of events & occasions- Fresher's day/Talent hunt/Teacher's day/Christmas programs etc at **3.71**
10. Learning Environment, Laboratories and its facilities-Science labs/Psychology lab/Language lab/Commerce and Management at **3.64**
11. Student counseling/Career guidance/Anti Ragging Cell at **3.63**
12. The lowest being Revision/Remedial classes at **3.32**, Certificate courses/value added courses at **3.42** and Internships/projects/assignments at **3.28**

Principal

Bishop Cotton Women's Christian College  
No. 19, 3rd Cross, C.S.I. Compound  
Bengaluru - 560 027



# BISHOP COTTON WOMEN'S CHRISTIAN COLLEGE

NO.19,3<sup>RD</sup> CROSS, C.S.I COMPOUND BANGALORE-560027

## FACULTY FEEDBACK FOR THE ACADEMIC YEAR 2018 - 2019

<b>Rating Scale</b>	<b>5</b>	<b>4</b>	<b>3</b>	<b>2</b>	<b>1</b>
<b>Rating</b>	<b>EXCELLENT</b>	<b>VERY GOOD</b>	<b>GOOD</b>	<b>AVERAGE</b>	<b>POOR</b>

SL NO.	QUESTION	RATING
<b>General</b>		
1	Relevance and Effectiveness of the Prescribed University Curriculum to Students Employment/ Higher Studies	4.00
2	Regular Upgradation of Curriculum by the University	3.45
3	Participation in Orientations/ Seminars/ Workshops/ Guest Lectures/ Faculty Development Programs	3.85
4	Contribution towards Curriculum-BOE/BOS/Textbook Committee/ Paper Setter/Examiner/Reviewer/ Chairperson of University Examinations	3.45
5	Schedule of Workload/ Classes and Maintenance of Work Record	4.50
6	Optimal utilization of library and its facilities.	4.00
7	Effectiveness of ICT in Teaching Methodology	3.95
8	Organization of Intra-department/ Inter-Department /Seminars/ Workshops/ Guest lectures / Conferences/Activities/ Programs on regular basis.	4.12
9	Paper Presentations and Publications.	2.80
10	Adoption and Effectiveness of Online methods of teaching during pandemic	4.10
11	Usage of Online Secondary Sources-Links/ Audio-Video presentations/ Documentaries etc. along with syllabus-based teaching.	3.95
12	Evaluation of Students performance based on online assignments/ projects/ reports/ tests.	3.92
13	Staff Participation in Webinars.	4.12
14	Organization of Webinars- International / Intra-department/ Inter-department/ Inter- collegiate/ State/ National level	3.60
15	Remedial / Revision Classes to enhance the performance of the students	4.12
16	Effectiveness of the evaluation system followed by the College	4.00
17	Welfare Schemes	4.28
18	College Facilities	4.30
19	Staff/ Department Meetings	4.19
20	Retreats/ Excursions	4.14
<b>AVERAGE:</b>		<b>3.942</b>



## BISHOP COTTON WOMEN'S CHRISTIAN COLLEGE

C.S.I Karnataka Central Diocese

#19,3<sup>rd</sup> Cross, C.S.I Compound, Mission Road, Bengaluru – 560027

Affiliated to Bengaluru City University

Contact No: 080 – 22212933/22129880

Email: principal@bcwcc.edu.in

Website: www.bcwcc.edu.in

### FACULTY FEEDBACK ANALYSIS 2018-2019

Feedback has been obtained from faculty members for the year 2018-2019 and the overall score is 3.9/5

1. Schedule of Workload/ Classes and Maintenance of Work Record has been rated the highest at 4.50/5
2. College Facilities at 4.30/5
3. Welfare Schemes at 4.28/5
4. Staff/ Department Meetings at 4.19/5
5. Retreats/ Excursions : 4.14/5
6. Organization of Intra-department/ Inter-Department /Seminars/ Workshops/ Guest lectures / Conferences/Activities/ Programs on regular basis, Staff Participation in Webinars and Remedial / Revision Classes to enhance the performance of the students at 4.12/5
7. Relevance and Effectiveness of the Prescribed University Curriculum to Students for employment/higher studies, Effectiveness of the evaluation system followed by the College and Optimal utilization of library and its facilities.at 4.0/5
8. Usage of Online Secondary Sources-Links/ Audio-Video presentations/ Documentaries etc. along with syllabus-based teaching AT 3.95
9. Evaluation of Students performance based on online assignments/ projects/ reports/ tests at 3.92
10. Participation in Orientations/ Seminars/ Workshops/ Guest Lectures/ Faculty Development Programs at 3.85
11. The lowest is Paper Presentations and Publications at 2.80.

PRINCIPAL

Bishop Cotton Women's Christian College  
No. 19, 3rd Cross, C.S.I. Compound  
Bengaluru - 560 027



## BISHOP COTTON WOMEN'S CHRISTIAN COLLEGE

C.S.I Karnataka Central Diocese  
#19,3<sup>rd</sup> Cross, C.S.I Compound, Mission Road,  
Bengaluru-27

Affiliated to Bengaluru City University

Contact No: 080 – 22212933/22129880

Email: principal@bewec.edu.in Website: www.bewec.edu.in

### ACTION TAKEN REPORT BASED ON 2018-2019 FEEDBACK

Based on the feedback and focusing upon the overall development of the Institution, the Principal along with the Governing Council have taken the following initiatives for the year 2019-2020.

#### 1. Introduction of additional certificate courses:

A compulsory certificate course was introduced for all B Com Students.


a	I B .Com	Excel/ Word/ PPT
b	II B.Com	Capital Markets
c	III BCOM	GST

#### 2. Revision and Remedial Classes:

- a. Suggestions were made for a bridge course/ revision classes at the beginning of the semester to revise topics already covered in their previous year of study that would enhance a student's learning ability and guarantee a smooth progress.
- b. Following the Internal Assessment Tests a review Parent Teacher's Meeting for all students to be held to assess their performance in the tests and focus upon areas needing improvement

#### 3. Internships/ Projects/ Assignments:

- a. With the appointment of a new placement officer for the year 2019-2020, students will be guided towards more number of Internships and projects linking Academia with Industry on a regular basis.
- b. More emphasis has been laid on second and third year students from all streams to take up projects and internships during their semester breaks.

  
PRINCIPAL

Bishop Cotton Women's Christian College  
No. 19, 3rd Cross, C.S.I. Compound  
Bengaluru - 560 027